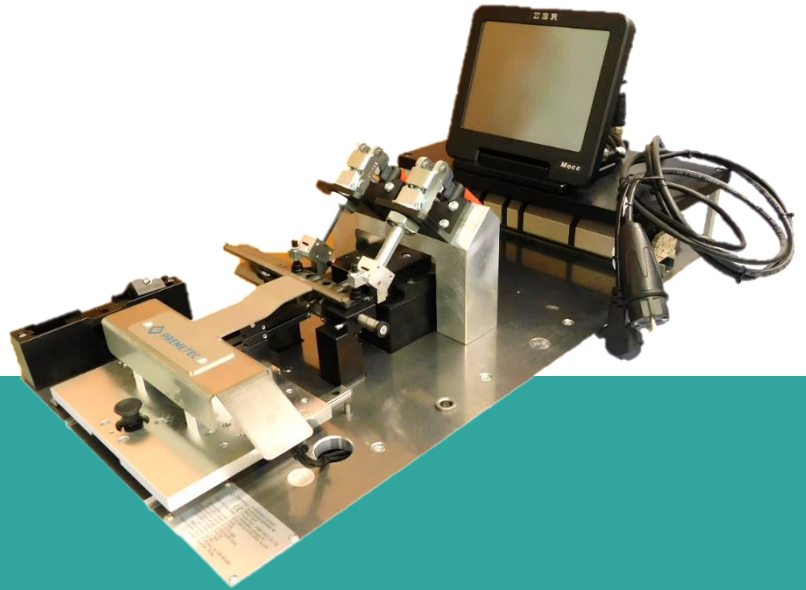
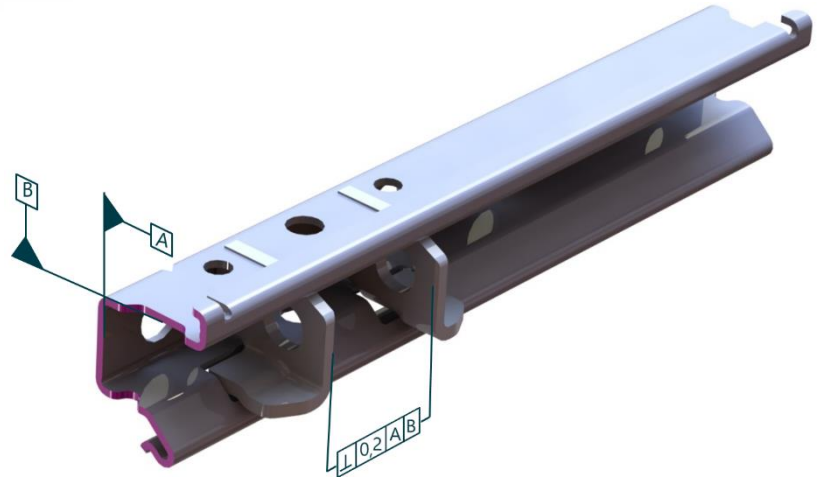



## Geometrical test gauge



- Test gauge for geometric dimensions and positional tolerances on small welded assemblies made of formed sheet metal parts, e.g. guide rails
- Can be operated manually for spot checks
- Measuring principle:
  - Alignment of the test piece at specified base points
  - Automatic scanning of the contours by digital measuring sensors
  - Manual OK/NOK inspection of the contours by means of good/no good gauge
- Evaluation of the digitally measured dimensions with the mathematical functions included in the measuring software
- Test orders for saving and evaluating the measured data  
Test plans for defining the test piece characteristics  
Setup of integrated master data (inspector, batch, etc.)



## Technical Data

<b>Test piece</b>	Welded assemblies from formed sheet metal parts (e.g. guide rails)	
<b>Test characteristics</b>		
Shape and position tolerances	Perpendicularity of welded elements Borehole positions Straightness, parallelism...	
Weld seam protrusion	OK/NOK test	
Borehole diameter	OK/NOK test	
<b>Test duration</b>	< 3 min	
<b>Measurement data processing</b>		
Hardware	Mecc PC, 512 MB RAM, 1 GB Flash	
Operating system	Windows	
Measuring data software	IBR ComGage®	
Visualisation	Touch panel PC	
Storage	csv file	
Export	individual QA systems	
		
<b>Electrical characteristic data</b>	<b>IEC</b>	<b>UL / CSA</b>
Supply	230 V / 50Hz / 16A	110 VAC / 60 Hz / 16 A
Control voltage	24 V DC	24 V DC
Connected load	24 VA	24 VA
<b>Dimensions</b>		
Width	350 mm	
Depth	700 mm	
Height	330 mm	
Weight	approx. 30 kg	